

Strawberry Canyon Fire Trails and Nearby Paths

Length: 7.7 miles

Time: About three hours

Difficulty: 4

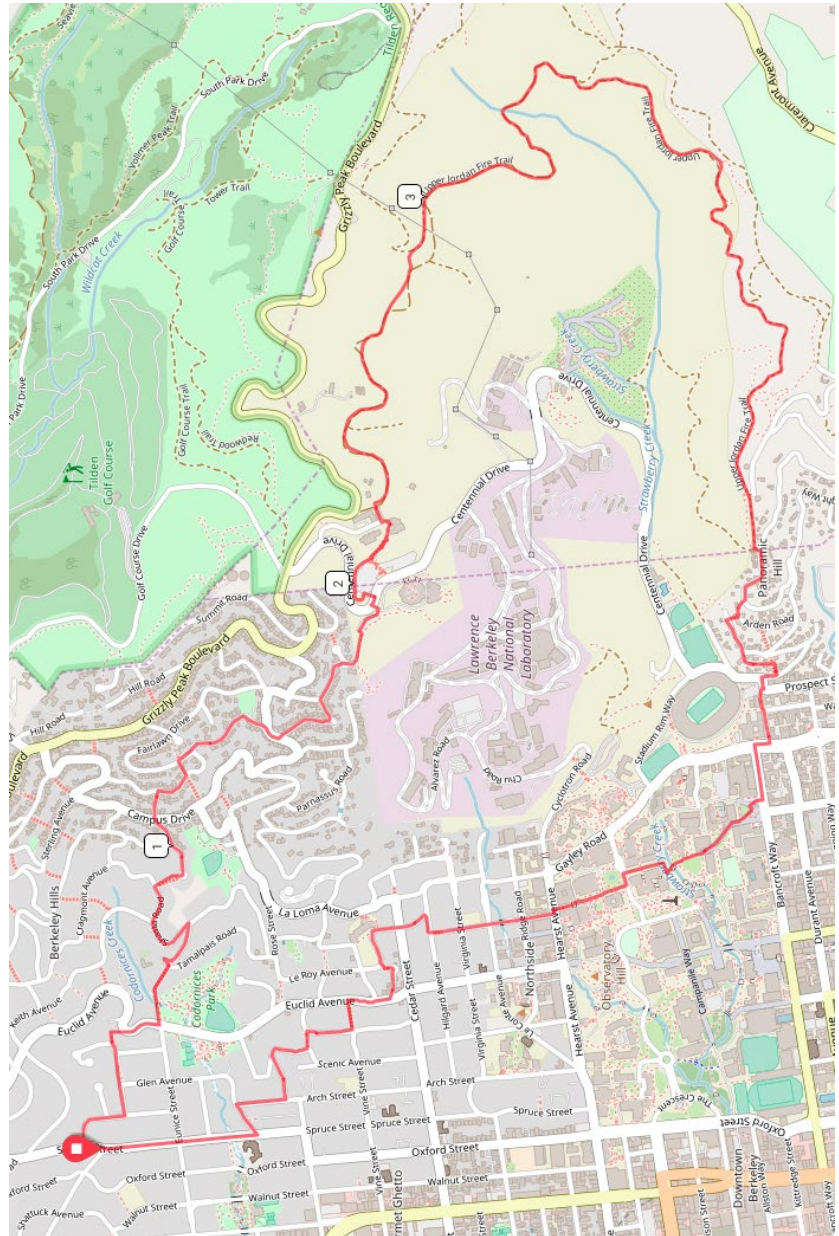
Elevation Gain: 1,200 feet

**Starting Point: Spruce St.
and Los Angeles Ave.**

**Transportation: AC Transit
bus 67 stops at Spruce and
Los Angeles. Parking is
also available on Spruce or
Los Angeles.**

Overview:

Climb steep paths to the Lawrence Hall of Science, then descend three miles of gentle, scenic fire trails through Strawberry Canyon to the University, head down Panoramic Hill via paths, and return on flatter paths and streets. This walk is a favorite due to the great views, beautiful paths and trails, and the fact that most of the hard climbing is done at the very beginning.



Directions and pictures:

Start at Spruce and Los Angeles, or, for a slightly shorter loop, Euclid and Eunice. Begin by walking up Spruce (east) and make your first right onto Arch St. Arch climbs a hill, then goes down to Oak, where you should make a left to continue up into the Berkeley Hills. Oak ends after one block; here, continue straight up the shady first block of Oak St. Path, which has steps but is not too steep. At the top, head straight on the street, then continue onto the second block of the path which takes you down a hand-railed cement staircase to Euclid.

Turn right on Euclid and cross at Eunice into Codornices Park (if you want to skip the previous hill, you can start here, and stay on Euclid at the end of the walk to return here rather than turning down Vine Lane). Follow the concrete path down a gentle hill parallel to the

driveways of the nearby houses, then proceed across a bridge and up the stone steps of Tamalpais Path. The path takes you steeply up to Tamalpais Rd. Here, turn left and go one block up to Shasta, make another left, and walk past Keith to Northgate Path. Turn right to walk up the path, which is steep and has over 200 small wooden stairs, bringing you to Northgate the street and a view to your right back down on Berkeley and the San Francisco Bay. Go up the street a block and stay right to continue on Quail Ave. Take this to where it ends after two blocks and turn right. Very quickly you will reach Glendale Path; turn left and go up the steps one block. Here, make a right (on Fairlawn), then stay left at the intersection with Queens. After one long block, make a slight right onto Avenida, then a nearly immediate left onto Olympus. Take Olympus to where it dead-ends and continue straight onto a small trail which will lead you to the Lawrence Hall of Science, past a great view down on Berkeley.



The view from above the Lawrence Hall of Science encompasses most of San Francisco Bay

Take the small path to your left from the parking lot and cross Centennial Dr, continuing on the trail. Soon you will come to a multi-layer parking lot. Make a slight left to walk up the parking lot road to the final tier of lots, then turn right, walk through the lot, and turn left up the wooden steps. These steps will lead you up to the MSRI (Math and Sciences Research Institute) buildings. On your way, be sure to look back the phenomenal view down on Berkeley, Emeryville, the Bay, and the bridges across the it. At the top of the steps, make a slight right on

a small road, continue up a short hill and through another parking lot and shortly to a large log bench and an entrance to the Strawberry Canyon Fire Trail.

Right: Many lizards are visible in the sunny patches of the stairs up to MSRI

Make a right down this scenic dirt trail and follow it for about a mile, then stay on it as it loops around the canyon with views down to the University and the campanile. Stay right at any trail intersections so as not to end up on the upper fire trail. Another mile and a half, the trail will take you to a very steep hill. You'll know it when you see it, since it is so much steeper than any other part of the trail.

Descend this, then make a left off the trail and an immediate right down Panoramic Way. Where the road curves, make a slight right down Arden Path. (There is a street sign, so it isn't hard to



find.) At the bottom of the path, stay right and descend the steep, hand-railed, Arden Steps.

Left: The Upper Strawberry Canyon Fire Trail, namesake and highlight of the walk



Make a left at the bottom on Mosswood Rd, then make a slight right where the road curves onto Mosswood Lane, which is also signed. This path takes you gradually down through redwoods on a dirt trail and ends at one of only three "path intersections" in Berkeley. Here, turn right down Orchard Lane, then right on Panoramic War, then left on Bancroft Way. After a block, continue straight to go down Bancroft Steps and then take Bancroft the street another block down from where it restarts at the bottom of the path.

At Piedmont, Bancroft jogs to the right; follow it down one more block to College, then turn right into UC Berkeley. There are many ways through the campus. Just walk along any paths that look nice and try not to go too far left, just straight ahead and, if necessary, to the right. If you come out on Gayley Rd, which runs east of the university, turn left, then left again at Hearst. If you come out on Hearst, which ideally you should, take it to LeRoy, which is one block below Gayley Rd. and one block above Euclid. Cross Hearst and head north on LeRoy. Where it dead-ends, go up LeRoy Steps to connect to Hilgard. Turn right, then left shortly after at the spot where LeRoy restarts. When LeRoy curves for the second time past the German school, stay left to go down Hill Ct. Steps. There is a street sign so it should not be hard to find. The steps end at the top of Hill Ct, unsurprisingly. Head down this tiny dead-end road to Euclid Ave. and make a right. Cross Euclid at Buena Vista but continue heading north until Vine Lane, a path. Here, make a left (unless you started at Euclid and Eunice, in which case you should continue straight four blocks to finish your loop), noticing the ornate sign as you pass under it. At the bottom of the path, go right, then make your first left down Hawthorne Steps. Again, go right at the bottom then make your first left, this time on Rose St. Take Rose one block to Arch, go right a block to Glen, and go left a block to Spruce. Turn right on Spruce to climb three blocks back to the starting point.